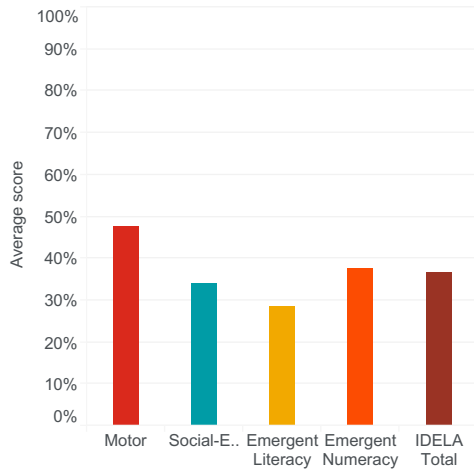


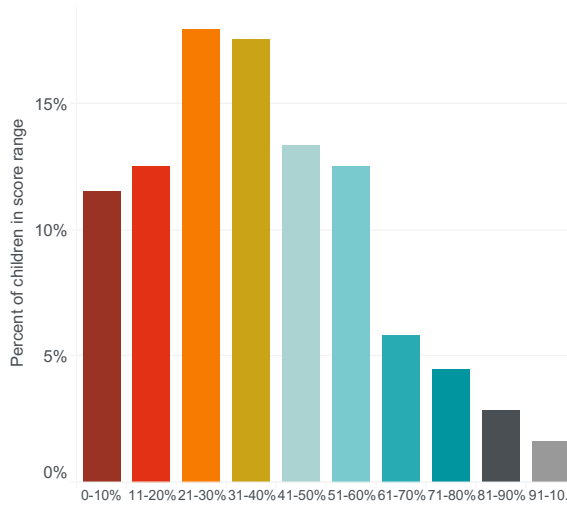
North East Syria. Save the Children (2018)

This data set includes data from 500 children in North-East Syria. Background information on geographic sample the data was collected. The average child was 4.7 years old. Data was collected as part of a baseline of Emergent Literacy and Math (ELM) and ELM at Home in NE Syria and seeks to understand how ELM supports the development of emergent literacy, emergent math, gross and fine motor, and social & emotional skills among young refugee children in NE Syria.

Average learning and development scores in IDELA domains

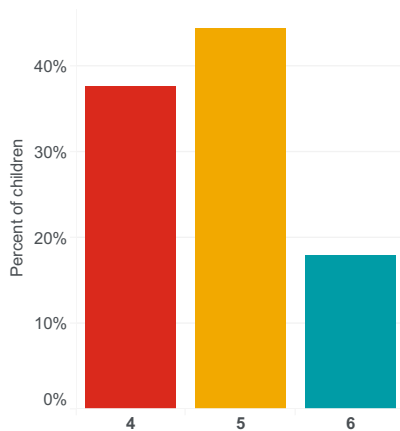


Distribution of Total IDELA scores

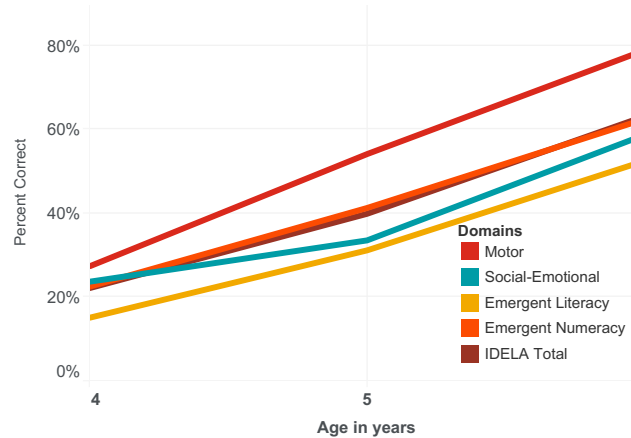


On average, children scored 37% correct on the IDELA assessment. The distribution was somewhat normal with 41-50% being the most common score range.

Distribution of children's ages

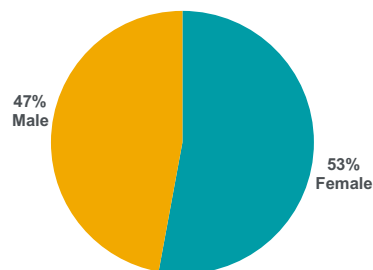


Average IDELA scores by child's age



Most children in the sample were 5 years old. On average, one additional year of age was associated with an additional 18 percentage points correct in overall IDELA score.

Distribution of children's gender



53% of children in the sample were female and we observe no significant differences in IDELA scores by gender.