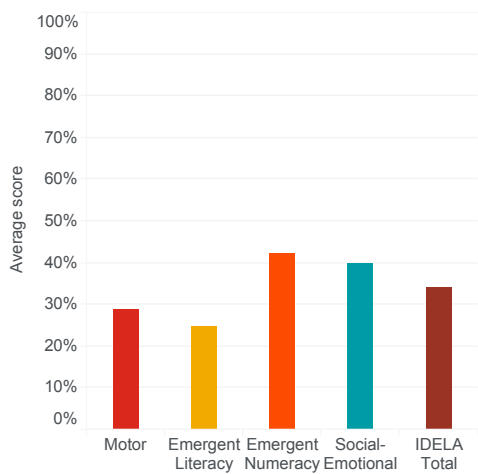


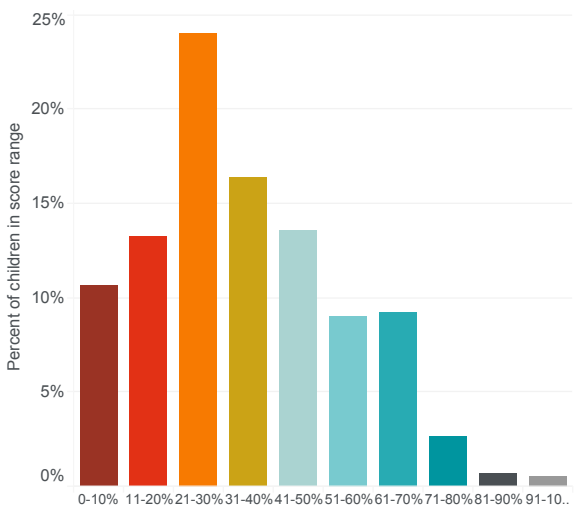
Belgrade, Serbia. R4D (2017)

This dataset includes data from 574 children living in urban and rural areas around Belgrade, Serbia. The data were collected as part of the baseline for the impact evaluation of a program focused on improving Roma parents' support for their children's early education. These data were collected by R4D in partnership with CIP Centre and Romanipen. The standard IDELA tool was adapted and 15 out of 22 core items were used. The average age of children was 4.2 years.

Average learning and development scores in IDELA domains

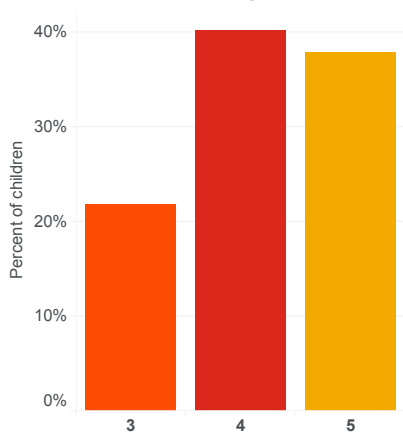


Distribution of Total IDELA scores

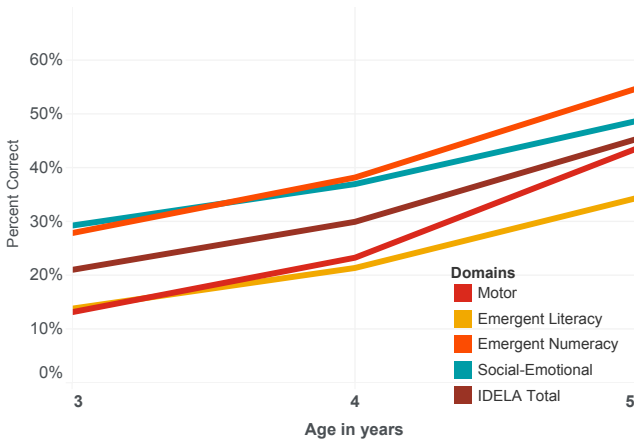


On average, children scored 43% correct on the IDELA assessment. Children displayed a large range of skills, and the most common scores were between 21-30% correct.

Distribution of children's ages

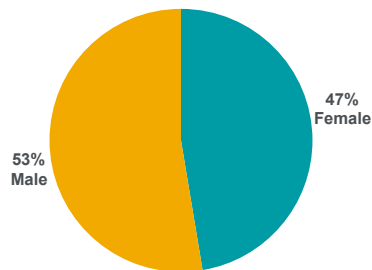


Average IDELA scores by child's age



The most common age among children was 4 years old. On average, one additional year was associated with an additional 13 percentage points correct in overall IDELA score.

Distribution of children's gender



47% of children in the sample were female. There were no significant differences between boys and girls on the Total IDELA score.